



The  
**Sheltering Arms**  
Foundation

## 2018-2019 Impact



**47** **Total Grants**

Early Childhood (26)  
Youth Development (14)  
Episcopal Faith Communities (4)  
Collective Impact Partners (3)

**\$494,000**  
**in Grants**

**Over**  
**3,500**  
**Children Served**

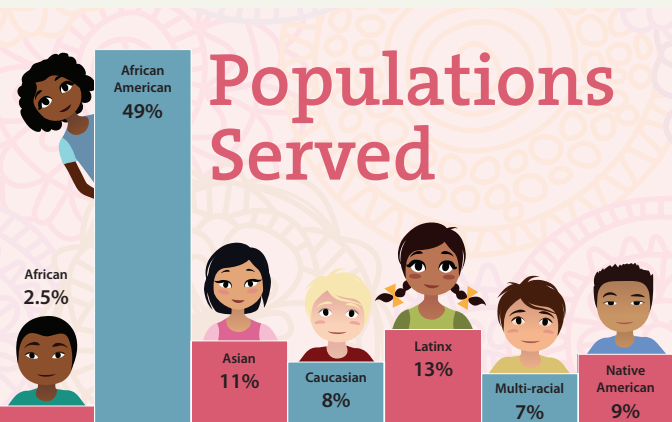
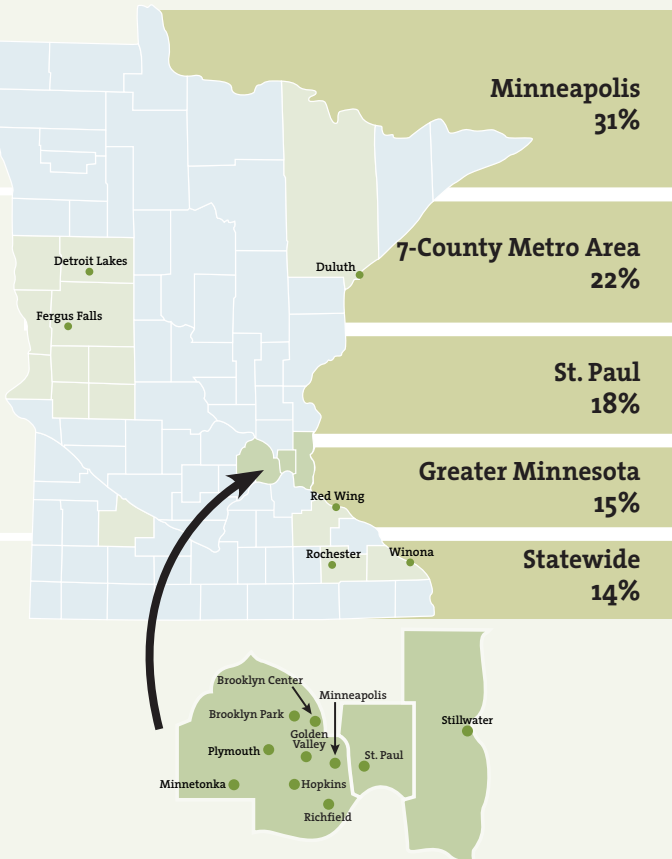
## Continue Your Impact All Year

These numbers reflect the impact your support has made over the past year. Help us keep this momentum going throughout the year by becoming a sustaining donor.

Visit [sheltering-arms.org/Donate](https://sheltering-arms.org/Donate). There you can pledge your level of monthly gift and become a member of our **Sister Annette Relf Sustainers' Circle**.



# Communities Served



For more information or to view our annual report, visit <https://sheltering-arms.org/annual-reports/>.