



## Making an Impact

The Sheltering Arms Foundation funds statewide nonprofit organizations and supports policies that benefit children and families who have the least access to resources.



The Sheltering Arms Foundation envisions a vibrant, thriving Minnesota where the opportunity gap for children is closed and all children have high-quality lives, including broad and equitable access to:

- childcare and early childhood education
- high-quality out-of-school time (OST) programming
- mental, physical, social, emotional, and intellectual wellbeing.



## Early Childhood

As an African-American organization, Hallie Q Brown Community Center employs a community-centered approach for education and holistic family support. Funding helps provide training for teachers and parents and classroom resources for students to give them the best opportunity for success. The grant from the Sheltering Arms Foundation will ensure that Hallie Q. Brown can continue to provide quality education and childcare in a safe and stable place for children to learn and develop.



## Youth Development

The Duluth-based American Indian Community Housing Organization has, like many of our programs, continued to provide services to its families during the Covid-19 pandemic including providing more support for basic needs such as food distribution and PPE. It created a classroom to provide academic support for distance learning and hired an AmeriCorps member to help tutor students in an SEL curriculum. This is a deeply culturally-based program and helps to give support and identity to Native youth facing many challenges.



## Advocacy

Childcare is a crucial part of our infrastructure, but a shrinking and inadequately trained early-childhood workforce has negatively affected all caregivers, particularly providers of color. As a result of many years of work by Sheltering Arms and a broad group of stakeholders (Transforming Minnesota's Early Childhood



Workforce), investment in early childhood workers was successfully and substantially increased at the state legislature.



Thanks to you and your support, effective programs have been rooted throughout Minnesota to positively impact children's lives. Please help us grow year-round by becoming a sustaining donor with our **Sister Annette Relf Sustainers' Circle**. Visit [sheltering-arms.org](https://sheltering-arms.org) and pledge your monthly gift today.



For more information or to view our annual report, visit [sheltering-arms.org/annual-reports](https://sheltering-arms.org/annual-reports).

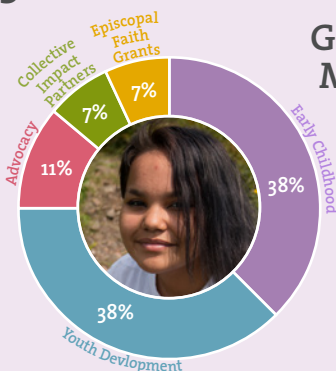
## What impacts were made in 2020-2021



Organizations Funded  
**45**



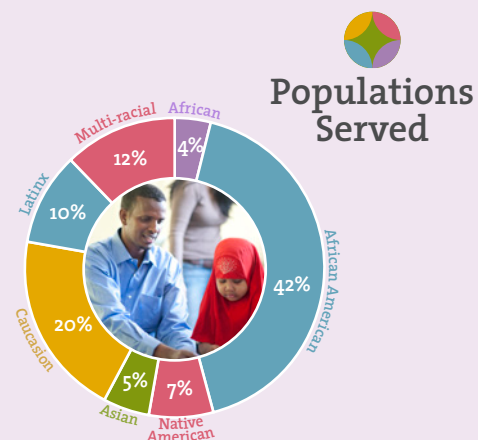
Grants Made



## Who was impacted



Numbers Served  
**Over 4,600 Children**

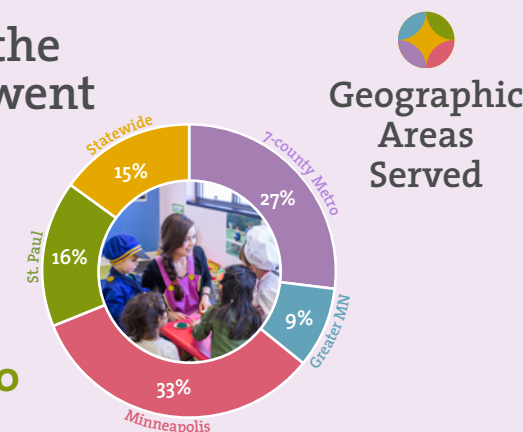


Populations Served

## Where the grants went



Dollars Granted  
**\$468,000**



Geographic Areas Served

